



External Attack Surface Management

Complete Visibility. Continuous Monitoring.

In today's multi-cloud world, enterprises require a solution that effectively inventories, monitors and manages their corporate assets and digital footprint – an ad hoc approach simply no longer works. Manual processes and legacy tools make the process complex, expensive, and results are flooded with false positives and human errors. The only way to gain complete visibility across your entire IT ecosystem requires an External Attack Surface Management (EASM) solution that is a hybrid approach; a solution that provides automated risk-based vulnerability intelligence coupled with validation that leverages cyber analytics and human expertise.

The Cornerstone of Your Cybersecurity Program

The Edgescan External Attack Surface Management Solution solves the lack of visibility and remediation velocity that occurs with legacy tools and manual processes; making it the cornerstone of any modern-day cybersecurity program. It provides complete visibility and the flexibility for organizations to modify their change and deployment models whenever needed.

As the adage goes, you can't secure what you can't measure or see. Edgescan EASM solves this problem by providing immediate visibility of an enterprise's internet-facing estate and then continuously monitors the attack surface as it evolves and changes.

Edgescan EASM removes the complexity of tool management and manual processes. Simply provide a domain name and the platform immediately begins to inventory your digital assets and maps your footprint; this process can be repeated as often as you wish.

Map & inventory assets. Uncover attack vectors.

Key features and benefits include:

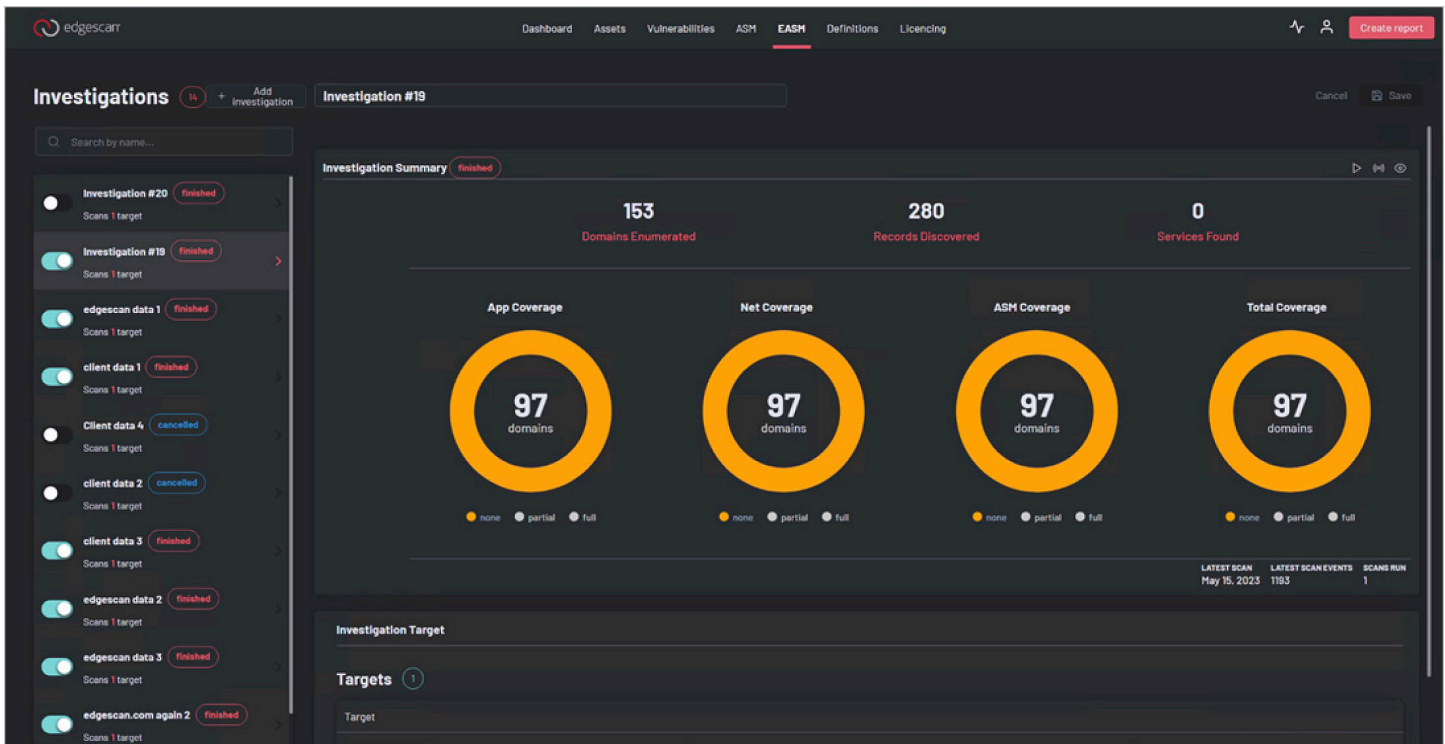
Map and inventory DNS and internet records – Discover existing records related to your deployed systems, servers, websites, API's and applications.

Discover and inventory subdomains – Find related or obfuscated records that may direct an attacker to your internet footprint.

Get alerts for discoveries and exposures – Track and inventory exposures and set up custom alerting so important information doesn't get lost in the noise.

Web and API navigation of your discovered exposures – With full role-based access control, and an award-winning UI, you can quickly discover and report on your exposures.

Unlimited on demand investigations – Run proactive and continuous investigation at the pace your organization requires.



Receive actionable risk intelligence with the ability to rescan on demand, ensuring hosts and assets are fixed.

Get an Optimal View with a Combination of Solutions

The Edgescan hybrid approach combines EASM with its award-winning PTaaS (Penetration Testing as a Service) and RBVM (Risk-based Vulnerability Management) solutions providing an optimal view of risks and exposures, understanding exactly what assets exist and what level of coverage is being applied. The outcome of combining EASM with the hybrid approach of PTaaS and RBVM results in detailed, actionable and validated vulnerability intelligence that provides risk prioritization for faster remediation and coverage assurance.

Licensing

Edgescan EASM is a subscription-based service and the license includes the following capabilities:

- _____
- DNS enumeration and internet records discovery
- _____
- Subdomain enumeration and shadow IT enumeration
- _____
- Service Discovery and exposure alerts
- _____
- Web and API navigation of your discovered exposures
- _____
- Coverage correlation engine for RBVM/PTaaS and discovered assets
- _____
- Unlimited on demand investigations
- _____

For more information on how Edgescan can help secure your business, [contact us here](#).

**One platform.
Five full-featured solutions.**



EASM



RBVM



AST



API Security
Testing



PTaaS



Ireland Unit 701 Northwest Business Park, Ballycoolin, Dublin 15, D15 CH26
United States 445 Park Avenue, 9th Floor, New York, NY 10022

edgescan.com Copyright© 2023 Edgescan. All rights reserved.